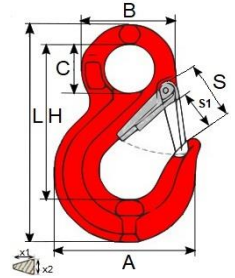


EYE HOOKS

EYE HOOK EN1677-2

GRADE 8 ACCESSORIES FOR CHAIN SLINGS

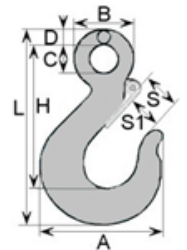
standard: EN1677-2
 surface finish: red painted
 safety factor: 4:1
 hook marking: *manufacturer's code *traceability code *(WLLxx.xxT) *grade number (chain size.8) *CE
 safety latch marking: *chain size
 usage: for chains slings and wire rope slings; for lifting purposes



code	chain	WLL	safety latch forged	A	B	C	H	L	S	S1	X1	X2	weight
	[mm]	[T]	[code]	[mm]	[mm]	[mm]	[mm]	[mm]	[mm]	[mm]	[mm]	[mm]	[kg/pcs]
HLA0112	6	1,12	HZHLA 0112	68	41	20	78	107	27	22	20	14	0,26
HLA020	7-8	2,00	HZHLA 020	77	48	25	98	131	34	27	23	18	0,46
HLA0315	10	3,15	HZHLA 0315	102	71	38	121	164	37	31	33	21	0,90
HLA053	13	5,30	HZHLA 053	131	83	43	151	212	51	40	44	27	2,05
HLA080	16	8,00	HZHLA 080	153	96	50	182	253	55	44	48	34	2,99
HLA125	20	12,50	HZHLA 125	195	119	62	215	300	61	52	59	44	5,87

EYE HOOK DIN689

material: drop forged (carbon) steel, quenched and tempered
 surface finish: galvanized
 safety factor: 4:1
 marking: *code number (WLLxx.xxT) *CE
 safety latch: galvanized steel
 usage: general use



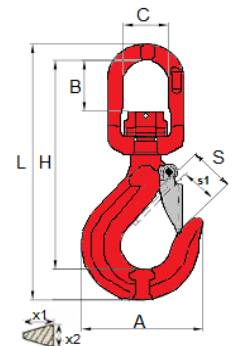
code	WLL	A	B	C	D	H	L	S1	S2	weight
	[T]	[mm]	[mm]	[mm]	[mm]	[mm]	[mm]	[mm]	[mm]	[kg/pcs]
HCDinZ0025	0,25	54	27	12	8	62	88	18	13	0,13
HCDinZ005	0,50	71	36	15	10	83	118	24	21	0,32
HCDinZ010	1,00	95	46	20	13	112	160	32	28	0,81

SWIVEL HOOKS

SWIVEL HOOK EN1677-2

GRADE 8 ACCESSORIES FOR CHAIN SLINGS

standard: EN1677-2
 surface finish: red painted
 safety factor: 4:1
 marking: *manufacturer's code *traceability code *(WLLxx.xxT) *grade number (chain size.8) *CE
 safety latch: galvanized steel
 usage: for chains slings and wire rope slings; for lifting purposes



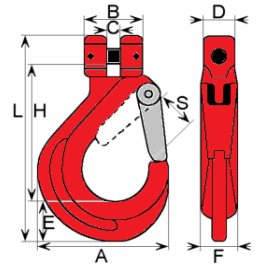
code	chain	WLL	A	B	C	H	L	S	S1	X1	X2	weight
	[mm]	[T]	[mm]	[mm]	[mm]	[mm]	[mm]	[mm]	[mm]	[mm]	[mm]	[kg/pcs]
HOA0112	6	1,12	69	26	31	112	139	25	21	18	16	0,38
HOA020	7-8	2,00	89	39	43	150	185	28	24	25	20	0,99
HOA0315	10	3,15	102	40	43	161	207	30	27	31	23	1,24
HOA053	13	5,30	122	45	48	188	248	39	35	42	33	2,33
HOA080	16	8,00	155	55	62	240	315	48	43	47	34	3,86
HOA125	20	12,50	190	50	68	270	360	62	53	61	41	6,88

CHAIN HOOKS

CLEVIS HOOK EN1677-2

standard: EN1677-2
 material: drop forged (alloy) steel, quenched and tempered
 surface finish: red painted
 safety factor: 4:1
 hook marking: *manufacturer's code *traceability code *(WLL.xx.xxT) *grade number (chain size.8) *CE
 safety latch marking: *chain size
 usage: for chains slings; for lifting purposes

GRADE 8 ACCESSORIES FOR CHAIN SLINGS



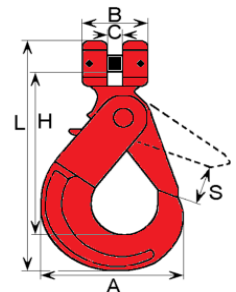
code	chain	WLL	safety latch forged	A	B	C	D	E	F	H	L	S	weight
	[mm]	[T]	[code]	[mm]	[mm]	[mm]	[mm]	[mm]	[mm]	[mm]	[mm]	[mm]	[kg/pcs]
HŁ0112	6	1,12	HZHL 0112	73	31	8	23	21	14	76	110	23	0,31
HŁ020	7-8	2,00	HZHL 020	84	37	9	25	25	17	84	127	24	0,52
HŁ0315	10	3,15	HZHL 0315	99	49	13	28	30	26	101	154	30	1,00
HŁ053	13	5,30	HZHL 053	130	54	18	32	44	27	124	194	38	1,78
HŁ080	16	8,00	HZHL 080	160	69	22	38	59	34	145	235	48	3,55
HŁ125	20	12,50	HZHL 125	190	78	23	44	60	42	175	275	55	5,84

SELF LOCKING HOOKS

SELF LOCKING CLEVIS HOOK EN1677-3

standard: EN1677-3
 material: drop forged (alloy) steel, quenched and tempered
 surface finish: red painted
 safety factor: 4:1
 marking: *working load limit (WLL) *grade number (chain size.8) *CE
 usage: for chains slings; for lifting purposes

GRADE 8 ACCESSORIES FOR CHAIN SLINGS



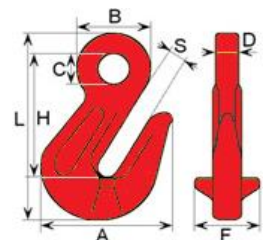
code	chain	WLL	A	B	C	H	L	S	weight
	[mm]	[T]	[mm]	[mm]	[mm]	[mm]	[mm]	[mm]	[kg/pcs]
HBŁ0112	6	1,12	69	33	8	98	131	36	0,47
HBŁ020	7-8	2,00	86	40	10	117	159	47	0,84
HBŁ0315	10	3,15	104	45	13	140	195	56	1,48
HBŁ053	13	5,30	133	58	16	175	244	66	2,85
HBŁ080	16	8,00	170	78	19	220	300	66	6,00
HBŁ125	20	12,50	195	80	23	230	330	67	8,17

EYE GRAB HOOKS

EYE GRAB HOOK EN1677-1

standard: EN1677-1
 material: drop forged (alloy) steel, quenched and tempered
 surface finish: red painted
 safety factor: 4:1
 marking: *manufacturer's code *traceability code *(WLL.xx.xxT) *grade number (chain size.8) *CE
 usage: for chains slings; for lifting purposes

GRADE 8 ACCESSORIES FOR CHAIN SLINGS



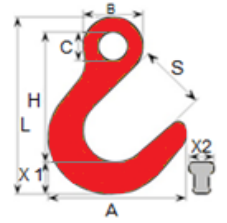
code	chain	WLL	A	B	C	D	F	H	L	S	weight
	[mm]	[T]	[mm]	[mm]	[mm]	[mm]	[mm]	[mm]	[mm]	[mm]	[kg/pcs]
HS0112	6	1,12	46	30	14	8	20	46	73	8	0,14
HS020	7-8	2,00	54	36	18	9	30	60	92	10	0,30
HS0315	10	3,15	70	46	20	13	45	78	120	13	0,67
HS053	13	5,30	94	56	26	15	55	99	155	16	1,36
HS080	16	8,00	106	64	30	19	70	104	168	19	2,12
HS125	20	12,50	133	83	38	23	73	135	215	23	4,10

SPECIAL HOOKS

FOUNDRY EYE HOOK EN1677-1

standard: EN1677-1
 surface finish: red painted
 safety factor: 4:1
 marking: *manufacturer's code *traceability code *(WLLxx.xxT) *grade number (chain size.8) *CE
 usage: for chains slings and wire rope slings; for lifting purposes

GRADE 8 ACCESSORIES FOR CHAIN SLINGS

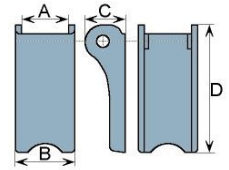


code	chain	WLL	A	B	C	H	L	S	X1	X2	weight
	[mm]	[T]	[mm]	[mm]	[mm]	[mm]	[mm]	[mm]	[mm]	[mm]	[kg/pcs]
HK0112	6	1,12	99	42	21	101	133	48	23	16	0,32
HK020	8	2,00	118	40	17	118	162	61	32	25	1,05
HK032	10	3,20	145	50	22	145	192	75	38	33	2,02
HK053	13	5,30	180	84	43	180	240	88	46	33	2,59
HK080	16	8,00	205	95	48	210	275	102	50	38	4,09
HK125	20	12,50	245	119	64	245	330	105	57	48	6,44

SAFETY LATCHES FOR HOOKS

SAFETY LATCH FOR HOOKS HLAxxx

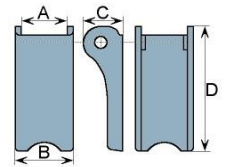
material: forged steel
 surface finish: galvanized
 usage: for hooks HLAxxx



code	for hooks	A	B	C	D	weight
		[mm]	[mm]	[mm]	[mm]	[kg/pcs]
HZHLA0112	HLA0112, HOA0112	13,5	20	12	43	0,030
HZHLA020	HLA020	16	21	15	57	0,045
HZHLA0315	HLA0315	16	16	15	57	0,055
HZHLA053	HLA053	21	30	20	68	0,091
HZHLA080	HLA080, HCDinZ025	26	29	24	85	0,126
HZHLA125	HLA125	27	37	23	84	0,190

SAFETY LATCH FOR HOOKS HLxxx

material: forged steel
 surface finish: galvanized
 usage: for hooks HLxxx



code	for hooks	A	B	C	D	weight
		[mm]	[mm]	[mm]	[mm]	[kg/pcs]
HZHL0112	HL0112	14	20	12	43	0,030
HZHL020	HL020	15	22	15	52	0,045
HZHL0315	HL0315	18	25	17	63	0,062
HZHL053	HL053	22	25	21	78	0,126
HZHL080	HL080	27	29	24	84	0,136
HZHL125	HL125	28	36	25	95	0,220