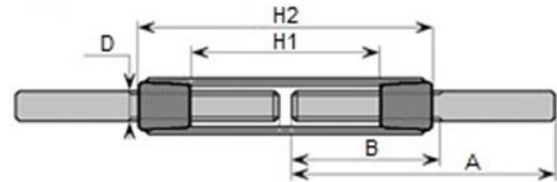


# GALVANIZED TURNBUCKLES

## TURNBUCKLE DIN1480 black

marking:           \*nominal size

available: rod-rod



code	nominal size	approx. strength	H1	H2	A	B	D	weight
		[kg]	[mm]	[mm]	[mm]	[mm]	[mm]	[kg/pcs]
SCC08X110X-X	M 8	415	78	110	120	65	8	0,17
SCC10X120X-X	M 10	660	88	120	150	75	10	0,29
SCC12X120X-X	M 12	940	84	120	150	75	12	0,41
SCC16X170X-X	M 16	1800	115	170	200	100	16	0,95
SCC20X200X-X	M 20	2750	132	200	220	120	20	1,68
SCC24X255X-X	M 24	4000	175	255	260	150	24	2,85
SCC30X255X-X	M 30	6350	175	255	260	160	30	4,11